

# QueerSUM心

## Karin Lee

Born and raised in Vancouver, Karin Lee is a writer, director, producer, and media artist whose works consistently traverse new territory and form.

Lee's art has been heavily influenced by her own family history. From an early age, she was exposed to the political movement and ideology of Chinese socialism in Canada through her father, who ran a fledgling communist bookstore in Vancouver's Downtown Eastside in the 1960s—a story portrayed in Lee's 2005 film *Comrade Dad*. Her great-grandmother Tsang Ho Shee, who had bound feet when she arrived in Canada in 1901, is the inspiration for the period drama *Small Pleasures* set in Barkerville, BC.

Themes of trans-Pacific migration, gender, identity, and intercultural contact surface in her documentaries such as *Made in China*, which portrays Chinese adoptees in Canada searching for their identity; *Cedar and Bamboo*, which highlights intermarriage between Chinese immigrants and First Nations people; and *Shattered*—a two-channel video installation commemorating the devastation of the Vancouver Anti-Asian riots that took place in Chinatown and Japantown in 1907.

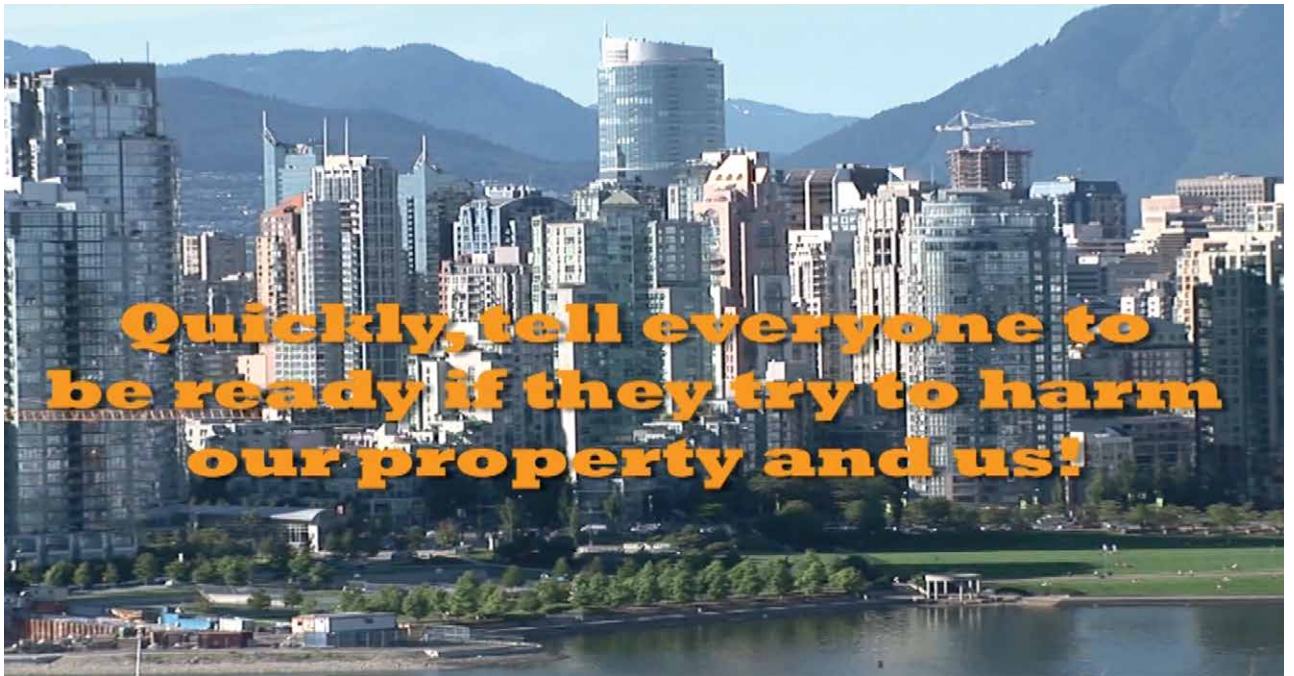
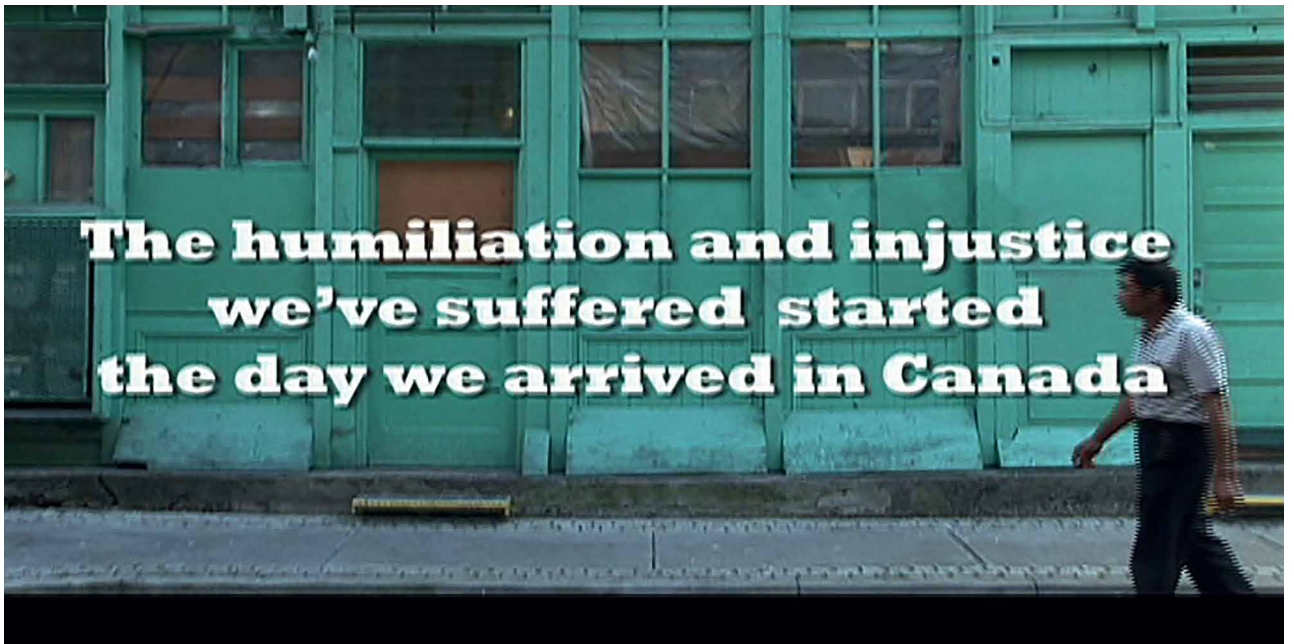
Lee's first solo show, QueerSUM心, exhibits this spring at the newly opened SUM Gallery, in the heart of Vancouver's Chinatown where Lee grew up. The exhibit investigates sentiments around being "Queer-sum" (a "Chinglish" translation and play on the words "queer love"), and explores perceptions and definitions of "feminism" from the late 1800s to the early 1990s, in a North American context and across the Pacific in China. The three media works in QueerSUM心 blend documentary and experimental multi-channel video installation, using satirical narrative and multiple languages including English, Chinese, Japanese, and Chinook Jargon.



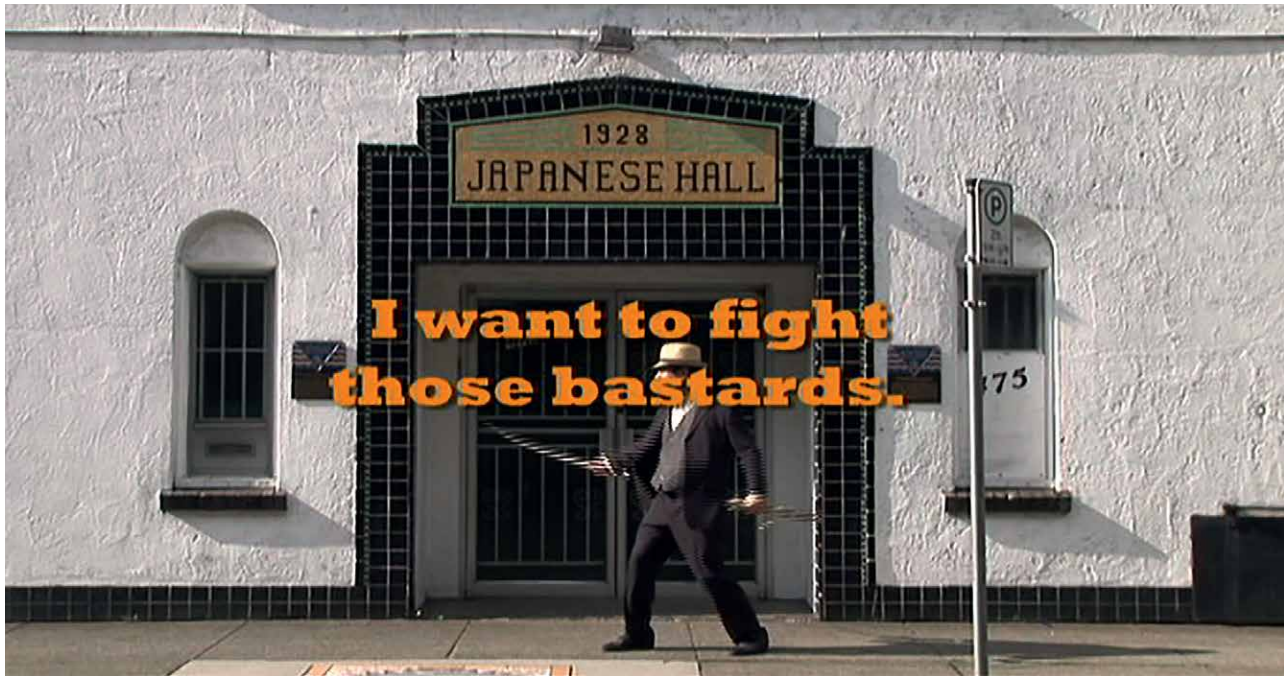
Karin Lee, from *Small Pleasures*, film stills, 2016




Karin Lee, from *Comrade Dad*, film stills, 2005



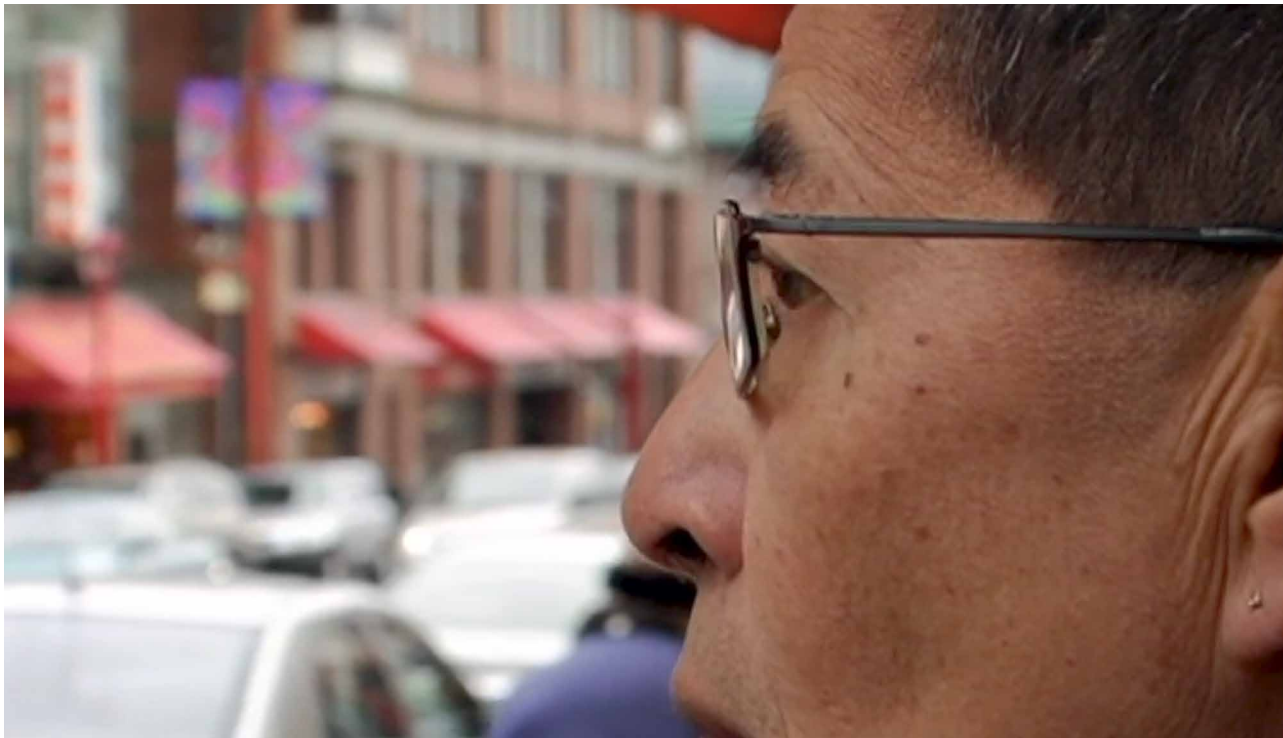
Karin Lee, from *Shattered*, film stills, 2007



Karin Lee, from *Shattered*, film stills, 2007

A woman with dark hair pulled back, wearing glasses and a light blue denim jacket over a black t-shirt. She is looking slightly to her right with a neutral expression. The background is a green wall with a doorway and some blurred text.

China is not my home; not my family.



Karin Lee, from *Cedar and Bamboo*, film stills, 2010